

July 2020

## Laser Interactive Ultra-Short Throw Projectors

HD interactive display for bright and engaging classrooms

EB-735Fi and EB-725Wi



## Overview

Take classroom collaboration to another level with the Epson EB-735Fi series laser ultra-short throw projectors. Designed for new and untraditional forms of teaching to help educators captivate and inspire students in classrooms. The EB-735Fi series supports a variety of teaching environments and comes equipped with interactivity and a virtually maintenance-free laser light source, delivering bright and large display image to every student in the room.

### KEY FEATURES:

- **3 x Brighter colours and reliable performance\*** - 3LCD, 3-Chip Technology. Look for both high colour brightness and high white brightness
- **Reinvent your whiteboard** - turn any wall or existing dry-erase board into an interactive display for more efficient lesson learning and collaboration in the room
- **Break through laser technology** - provides up to 20,000 hours of virtually maintenance free operation, with the added benefits of higher image contrast and instant ON/OFF
- **Full HD display up to 100"** - for an optimal viewing experience and clear readability — over 2x as big as a 70" flat panel
- **Ultra-wide 16:6 image** – utilise the size of classroom to its maximum with display up to 110 inches for interactivity or multiple screen viewing (available only on EB-735Fi)
- **Touch-enabled interactivity** - turn on the projector and start writing using your finger or the included pens (finger touch unit is optional)
- **Easy to use** - just walk in, turn it on and start writing - no computer, software or training is required
- **Capture, save and share** - no need to transcribe meeting notes or snap a photo; easily save, print or email directly from your projector
- **Wireless device compatibility** - wirelessly display documents, files and photos from your iPad, iPhone, Chromebook and Android mobile devices with the Epson iProjection App

\*Colour brightness (colour light output) in brightest mode, measured by a third-party lab in accordance with IDMS 15.4. Colour brightness will vary depending on usage conditions. Top-selling Epson 3LCD projectors versus top-selling 1-chip DLP projectors based on NPD sales data for May 2017 – April 2018.

## BASIC FUNCTIONS

### 3LCD Technology

All Epson projectors are based on 3-chip LCD technology for amazing colour, incredible detail and solid reliability. 3LCD's 3-chip architecture dedicates an entire chip to process each primary colour – red, green and blue, continuously. Unlike single-chip technology that delivers colour sequentially, you get full-time colour. The result is vibrant, realistic images and video all delivered with 3LCD's true-to-life colour.



### Up to 3x Brighter Colours with Epson Projectors\*



Epson projectors use 3LCD Engines that have no colour wheel with a white segment and therefore don't force a tradeoff between white and colour brightness.

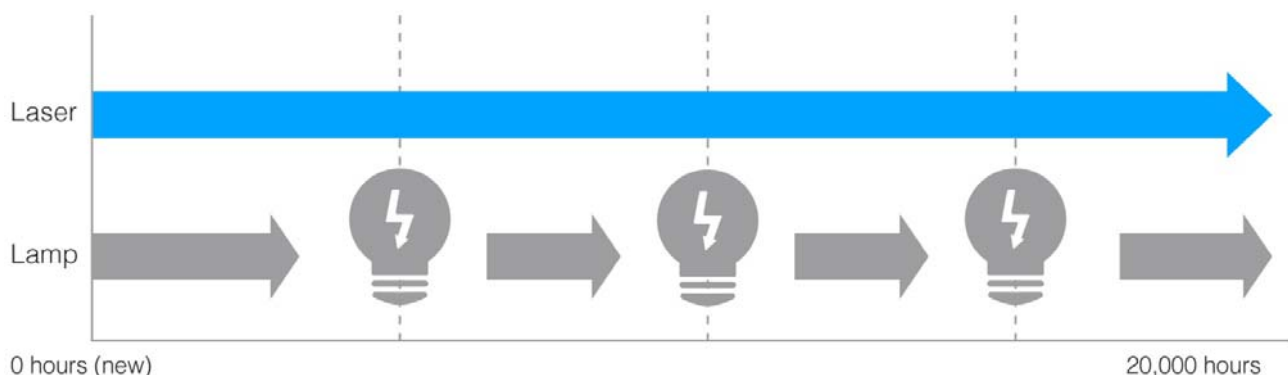
In fact, Epson projectors have up to 3x Brighter Colours than their leading competitive 1-chip DLP projectors\*. If you are looking for business and education projectors or 720p home entertainment projectors, know that choosing Epson projectors means up to 3x brighter colours. If you are looking for 1080p home entertainment projectors, you consistently get 2x and up to 3x Brighter Colours than competitor 1-chip DLP projectors\*.

All Epson projectors list both White Brightness and Colour Brightness specifications, and all have high Colour Brightness.

\*Colour brightness (colour light output) in brightest mode, measured by a third-party lab in accordance with IDMS 15.4. Colour brightness will vary depending on usage conditions. Top-selling Epson 3LCD projectors versus top-selling 1-chip DLP projectors based on NPD sales data for May 2017 – April 2018.

### Laser Light Source

Experience astonishing quality and reliability with Epson's laser light source technology. The newly designed laser light source and advanced electrostatic filter offers fit and forget reliability to keep maintenance to a minimum. Additionally, the laser light source is highly reliable, eliminating worry of the interruptions during important presentations.



For further information please visit [www.channel.epson.com.au](http://www.channel.epson.com.au)



## Big Screen



While conventional whiteboards and panels are limited to a pre-determined height and width, UST projectors have no such constraints. Set the size of the interactive area to fit the available space in your classroom.

## Ultra Short Throw



An ultra-short-throw design eliminates many of the common problems of interactive panel, such as eye glare. With an incredibly efficient throw ratio, this model allows you to project extra-large interactive images up to 100" in 16:9 and 110" in a 16:6 aspect ratio (EB-735Fi only).

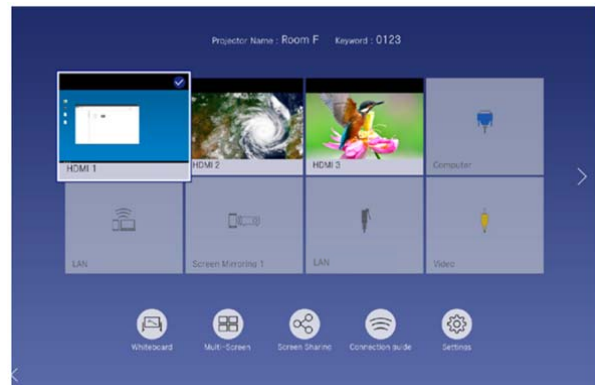
## Full HD Resolution



Enjoy images in Full HD resolution\* and crisp, sharp text without any distortion. Easily read the fine print in applications such as Excel and Word. With the addition of super resolution and detail enhancement processing, images are near cinema quality.

*\*only available on EB-735Fi*

## Home Screen



Get up and running in a snap with an intuitive, user-friendly home screen. Select the content source and easily access frequently-used functions such as the whiteboard tool, screen sharing and more.



## EASY WIRELESS CONNECTION

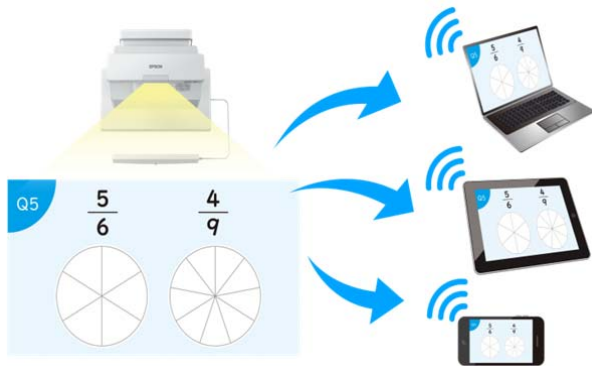
### Epson iProjection App

Wirelessly display content from your iOS or Android mobile devices as well as PCs, including Chromebook with the free Epson iProjection App\*.

*\*To use Epson iProjection, the projector must be configured on a network. Epson projectors can be networked either through the Ethernet port on the projector (check model specifications for availability) or via a wireless connection.*



### Image sharing



Capture projected images and share them with wirelessly connected devices using the Epson iProjection App.

### Moderator function



Use the moderator function in the Epson iProjection App\*\* to select a single moderator. Only the moderator can control the projected content.

*\*\*All the devices need to be wirelessly connected to the projector with Epson iProjection App. Moderator control is only available on Windows, macOS, iOS and Android devices.*

### Miracast

Sharing information in the classroom has been made easier with Miracast\*. Teachers can project their laptop or tablet screens without a cable connection and ensure high-resolution content can be viewed effortlessly.

*\*Laptops or mobile devices must support Miracast.*



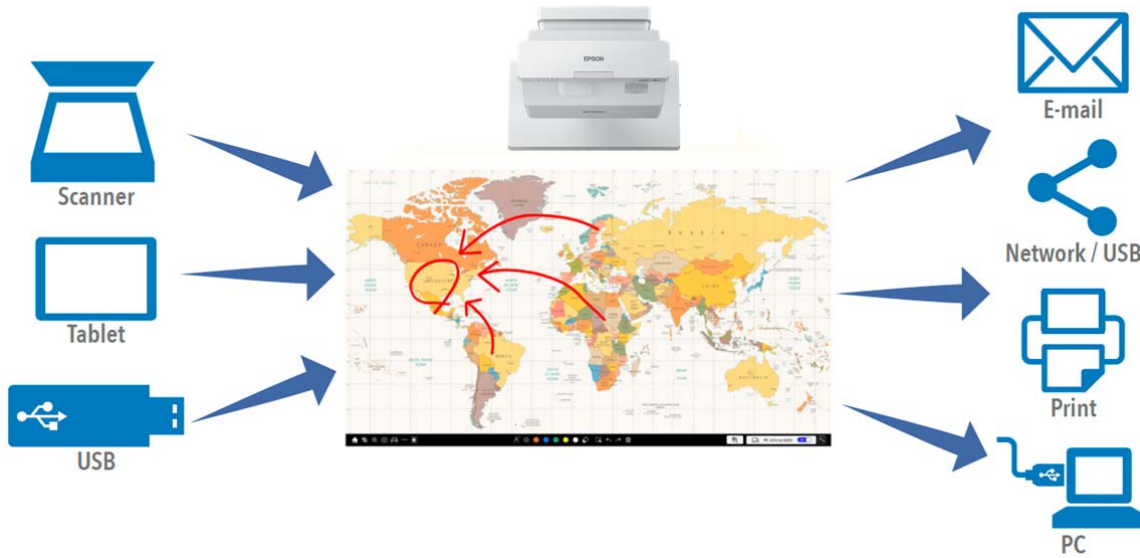
For further information please visit [www.channel.epson.com.au](http://www.channel.epson.com.au)



# EASY COLLABORATION

## Instant Information sharing

Whiteboard mode allows you to output the meeting results on-site in the user's preferred format. Reduce significant time to perform tasks such as saving classroom notes to PDF (on USB memory, Network), sending email, printing, and making class materials has been shortened considerably. You can also reuse and edit data again from a previous whiteboard session that was saved to a USB memory or server.



## Share notes via email



Share lecture notes and contents directly from the EB-735Fi series via email with up to 50 participants. Connect your projector to an active directory server and you can search names and email address.

## Easy to save notes to a PC



Simply connect to a PC via USB cable and you can save and upload any study material and whiteboard annotations directly to your PC or use optional USB wall control pad.

## Digital made easy, without a PC or software

Transform traditional dry-erase whiteboards, plain walls and even tables into digital surfaces. Just pick up the pen and start writing. Or, use your finger — touch-enabled interactivity — to draw, share and interact with intuitive and familiar gestures. Add pages, or insert shapes and images. When you're done, share your notes via the email, print or save functions — all without a computer.



## Large screen for video conferencing



You no longer need a flat-panel display for your videoconferencing needs. Connect your videoconferencing system to the EB-735Fi series and display an image as large as 100 inches.

Simultaneously display your additional content such as a webpage or presentation on one side of screen and videoconference, using the Split Screen feature.

## Flexible display options and sizes

Deliver impactful sessions with a multi-touch display of up to 100 inches (16:9 aspect) in pen and finger interactive mode. Additionally, the EB-735Fi is capable of displaying an ultra-wide 16:6 aspect image\* that is 110 inches.

*\*16:6 aspect is not available on EB-725Wi*



For further information please visit [www.channel.epson.com.au](http://www.channel.epson.com.au)





## Multi-PC Projection

Epson's Multi-PC utility with Moderator device management software allows you to simultaneously display up to four devices on the screen over a network (wired or wireless). The moderator can drag and drop participants into or out of the four quadrants and control which device screens to display. Encourage and control collaboration; it's perfect for comparing ideas and content side by side.



## INTERACTIVE FUNCTIONS

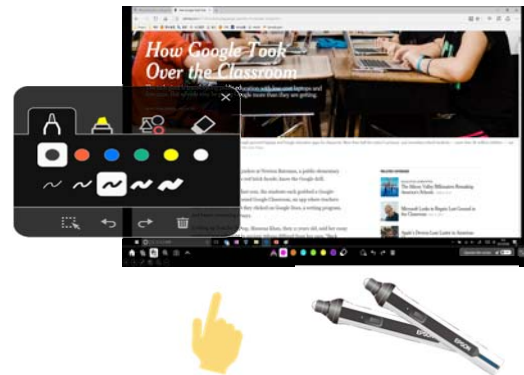
### Finger Touch



Use your finger\* to write or draw directly on to projected images.

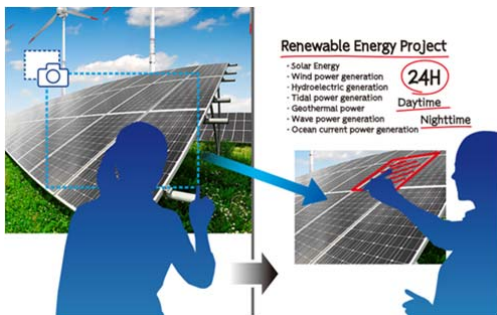
*\*Enable finger touch with optional FTU*

### Real time drawing and PC operation



Interact with your PC automatically by connecting a USB cable from the projector to the PC. This enables PC control using the included interactive pen and even with your finger (enable it with optional FTU).

### All on screen items can be rearranged and edited freely

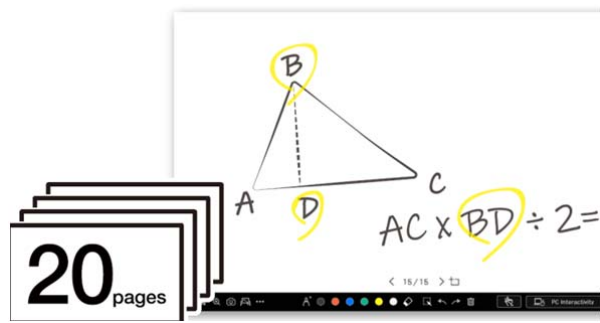


Any image on the screen can be resized, moved and captured as if it were an object. Even if there is no writing space on the screen, written contents can be shrunk down to make room for new annotations. Simply turn off touch function when presentation only mode is required.

For further information please visit [www.channel.epson.com.au](http://www.channel.epson.com.au)

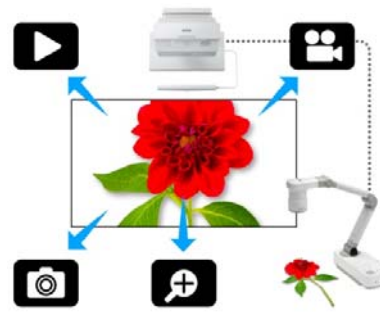


## Whiteboard function



There is no need to worry about running out of space when writing meeting notes or importing information on the Whiteboard with up to 20 pages available at one time.

## Document camera control



An Epson document camera can be controlled\* from the toolbar on the screen. Adjust image zoom and focus. Save\*\* the image or the recorded video\* to an SD card as an image or movie file.

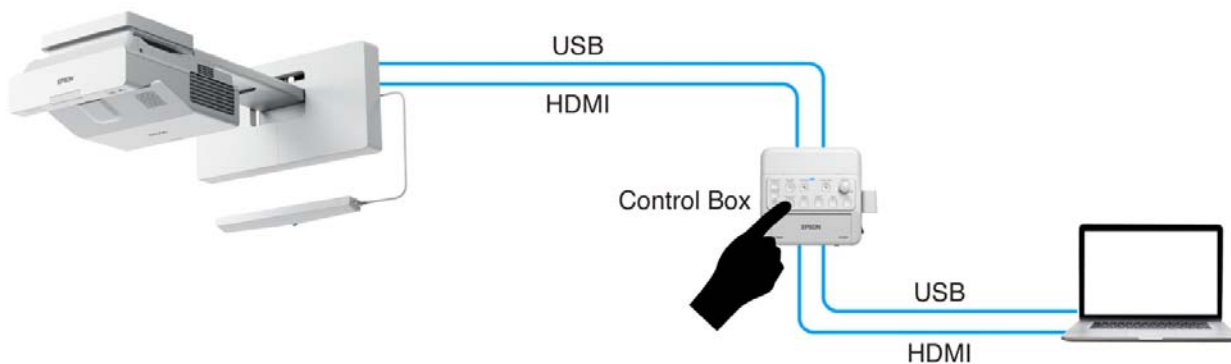
*\*available on ELPDC07, ELPDC13 and ELPDC21*

*\*\*available on ELPDC13 and ELPDC21 only*

## EASY MANAGEMENT

### Control box - ELPCB03

Pair up the EB-735Fi series with the ELPCB03 to easily turn power on/off, freely control AV mute and speaker volume, and select a device you want to project to a screen.



### New wall mount - ELPMB62



The ELPMB62 wall mount can save time and cost by simplifying the installation process of the EB-735Fi series. Designed for image stability and easy adjustment, it includes automated processes for screen and interactivity set up, ensuring the EB-735Fi series can be up and running within a matter of moments.

The ELPMB62 wall mount is ready to integrate with a Mini PC inside the base plate, enabling powerful yet simple setup.

For further information please visit [www.channel.epson.com.au](http://www.channel.epson.com.au)

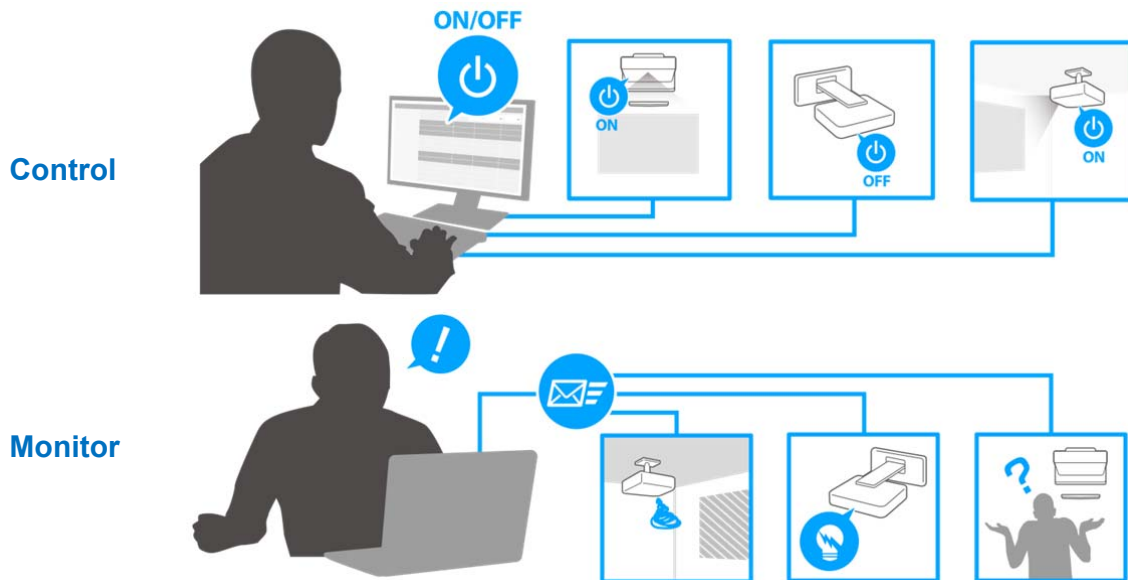


## Finger Touch Unit mount - ELPMB63

Wall plate for new optional finger touch unit is available for nonmagnetic surfaces.

## Epson Projector Management software

Manage multiple projectors with one device from a remote site. Epson Projector Management software allows you to check the status of multiple projectors through the network. You can also turn projectors on/off or set them to A/V mute simply by pressing the icon on this software. You can also schedule and execute firmware updates to connected projectors.



For further information please visit [www.channel.epson.com.au](http://www.channel.epson.com.au)



## Pricing

DESCRIPTION	PRODUCT CODE	RRP inc gst
EB-735Fi	V11H997553	\$3,999
EB-725Wi	V11H998553	\$3,699

## Accessories

Model	Product Code	RRP inc gst
Air Filter – ELPAF60 <b>NEW</b>	V13H134A60	\$20
Projector wall mount – ELPMB62	V12HA06A06	\$175
Finger Touch Unit (FTU) – ELPFT01	V12H007A24	\$319
FTU wall mount – ELPMB63	V12HA05A09	\$80
Pen – ELPPN05A	V12H773010	\$49
Pen – ELPPN05B	V12H774010	\$49
Hard Pen Tip – ELPPS03	V12H775010	\$13
Soft Pen Tip – ELPPS04	V12H776010	\$13
External Speakers – ELPSP02	V12H467053	\$199
Document Camera – ELPDC21	V12H731P01	\$799
Wireless Lan Adapter – ELPAP11*	V12H005A01	\$149
Projector ceiling mount – ELPMB23	V12H003B23	\$219

*\*With an optional ELPAP11, it is possible to use the Miracast and Wi-Fi function simultaneously (both simple AP mode and manual mode).*

Model	EB-735Fi <b>NEW</b>	EB-725Wi <b>NEW</b>	EB-695Wi	EB-1485Fi	EB-1480Fi
<b>RRP (inc GST)</b>	\$3,999	\$3,699	\$2,479	\$5,299	\$4,499
<b>Display Technology</b>	3LCD	3LCD	3LCD	3LCD	3LCD
<b>Resolution</b>	1080p	WXGA	WXGA	Full HD <sup>1</sup>	Full HD <sup>1</sup>
<b>Light Source</b>	Laser	Laser	Lamp	Laser	Laser
<b>Aspect Ratio</b>	16:9 up to 100" 16:6 up to 110"	16:10 up to 100"	16:10 up to 100"	16:9 up to 100" 16:6 up to 120"	16:9 up to 100"
<b>White/Colour Light Output</b>	3,600 lm / 3,600 lm	4,000 lm / 4,000 lm	3,500 lm / 3,500 lm	5,000 lm / 5,000 lm	5,000 lm / 5,000 lm
<b>Contrast Ratio</b>	2,500,000:1	2,500,000:1	14,000:1	2,500,000:1	2,500,000:1
<b>Throw Ratio</b>	0.26 (Zoom:Wide), 0.36 (Zoom:Tele)	0.28 (Zoom:Wide), 0.37 (Zoom:Tele)	0.28 (Zoom:Wide), 0.37 (Zoom:Tele)	0.27 (Zoom:Wide), 0.37 (Zoom:Tele)	0.27 (Zoom:Wide), 0.37 (Zoom:Tele)
<b>Offset</b>	5.0:-1	5.8:-1	5.8:-1	8.68:-1	8.68:-1
<b>Interactive</b>	Pen Included/ Finger Optional	Pen Included/ Finger Optional	Pen and Finger Included	Pen and Finger Included	Pen Included/ Finger Optional
<b>Keystone</b>	V ±3 H ±3	V ±3 H ±3	V ±3 H ±3	V ±3 H ±3	V ±3 H ±3
<b>Zoom Ratio</b>	1.0 - 1.35 (Digital)	1.0 - 1.35 (Digital)	1.0 - 1.35 (Digital)	1.0 - 1.35 (Digital)	1.0 - 1.35 (Digital)
<b>Digital output</b>	x	x	x	HDMI (All content)	HDMI (All content)
<b>Wireless and Miracast</b>	✓ <sup>2</sup>	✓ <sup>2</sup>	Optional ELPAP10 (no Miracast)	✓ <sup>2</sup>	✓ <sup>2</sup>
<b>Auto screen set up</b>	✓	✓	x	✓	✓
<b>Super Resolution and Detail Enhancement</b>	x	x	x	✓	✓
<b>HDBaseT Connectivity</b>	x	x	x	✓	x
<b>Edge blending</b>	x	x	x	✓	x
<b>Whiteboard Function</b>	20 Pages	20 Pages	1 Page	20 Pages	20 Pages
<b>Speakers</b>	16W	16W	16W	16W	16W
<b>Control Pad</b>	ELPCB03 Optional	ELPCB03 Optional	ELPCB03 Optional	Included	ELPCB03 Optional
<b>Projector Wall Mount</b>	ELPMB62 Optional	ELPMB62 Optional	ELPMB53 Optional	ELPMB62 Included	ELPMB62 Optional
<b>FTU Wall Mount</b>	ELPMB63 Optional	ELPMB63 Optional	Included	ELPMB63 Optional	ELPMB63 Optional
<b>Warranty Projector</b>	3 Years	3 Years	3 Years	3 Years	3 Years
<b>Power Consumption Normal/Eco</b>	255W/197W	255W/197W	354W/309W	366W/262W	366W/262W

<sup>1</sup> Pixel shifting technology achieves Full HD resolution on screen

<sup>2</sup> With an optional ELPAP11, it is possible to use the Miracast and Wi-Fi function simultaneously (simple AP mode and manual mode)

For further information please visit [www.channel.epson.com.au](http://www.channel.epson.com.au)





# Connectivity Panel

735Fi / 725Wi



For further information please visit [www.channel.epson.com.au](http://www.channel.epson.com.au)

