



All-in-One Windows Projector for Enterprise  
**Commence Meetings  
 of the Future**

# BenQ

# X

# Windows 11



Built-in Windows 11 IoT Enterprise OS



WPA2 certification and AES-128 encryption



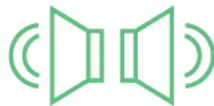
Preloaded with common business apps



Driver-free screen casting from any device



Auto visual and audio setup features



Two-channel 5W x2 speakers



Auto firmware scan & upgrade



3rd-party control system compatibility

## Effective PC-Free Cloud Meetings

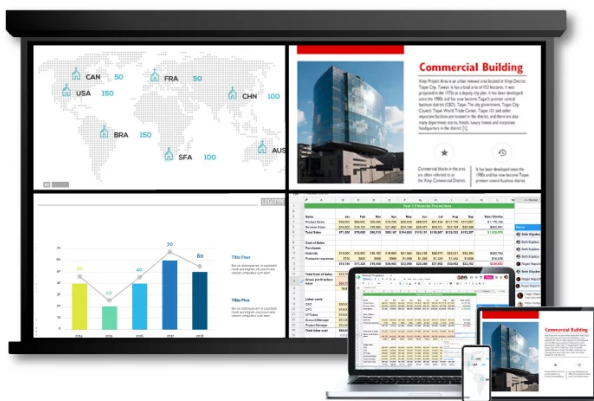


Transform a conventional meeting room into a modern cloud collaboration space. BenQ EH620 smart projector eliminates laptops and speakers, reducing device clutter but increasing capabilities when connected to a wireless keyboard-mouse set and webcam. Cloud workers can start smooth online meetings instantly.

What is a Windows Projector?

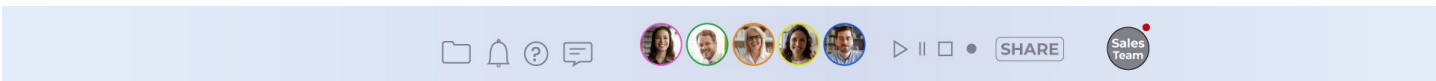
## Directly Project Cloud Presentations

Turn on EH620 Windows projector, launch built-in Edge and Chrome browsers, and access presentation files in OneDrive and Microsoft Teams without using laptops. This effectively reduces meeting preparation time, getting everything done on one projector to present seamlessly.



## Cast Multiple Presentations Simultaneously

Share content or collaborate from 4-way split windows on a big screen via Miracast, Airplay, Google Cast, and BenQ InstaShare wireless casting technologies without extra apps or Wi-Fi dongles. It's easy for team members to cast their presentations, up to 4 devices at the same time, for a thorough discussion.



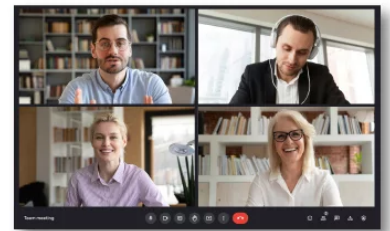
# Spark Hybrid Collaboration

BenQ-exclusive Launcher interface organizes apps into three groups, saving users' time from downloading, searching, or logging into apps. Just click the apps and start the meeting.

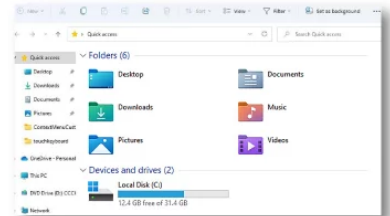
Learn more about BenQ Launcher



Conference



File manager



## Join Video Conferences with Built-in Apps

Use preloaded meeting apps like Google Meet, Skype for Business, and TeamViewer Meeting directly on the projector to free up personal devices from public use. Run the whole meeting smoothly without any embarrassing interruptions.

\*More apps can be downloaded from Microsoft Store.

## Simultaneously Share Content from Multiple Sources

EH620

**Overview**

Specifications

Q&amp;A

Downloads

Video

Contact Us

the same room can cast individually and share content via the

projector to remote attendees. This ensures every participant is on the same page without switching from image to image.



## Amplified Sound with Vocal Clarity

Specially designed for video conferences, EH620 offers two 5W speakers and a voice-enhanced Vocal Mode to let every remote or in-person attendee hear meeting details clearly for effective collaboration.

# Smart Installations. Secure Management.

## Auto-Adjustments for Optimal Settings

From boot to presentation, BenQ EH620 auto-detects the meeting content to provide the most suitable visual and audio settings. Instantly see and hear clearly without prior adjustments.



### Step 1

Turn projector on and set projection angle. Auto Keystone will automatically correct the image.

### Step 2

Launch presentation file and let Auto Picture Mode detect and optimize the projection according to content.

### Step 3

Auto Sound Mode detects sources to optimize the effects of voices and sounds.

## Reduced Cost and Time-Saving Management



### Reduce 50% of Devices Used

The all-in-one projector is simpler to use, reducing management and maintenance of multiple meetings and devices.



### Auto Firmware Scan and Upgrade

Auto Firmware Update notifications for download and install, all completed on the projector.

NOTE: This function supports BenQ app and Windows driver/security update. For TI, Windows firmware and BIOS update, please contact via service channel.

### 3rd-Party Central Control

Highly compatible with control systems such as PJ-Link, Crestron, and AMX for easier integration into existing systems.

