

February 2021

## Unleash Possibilities with LightScene

Laser projector for digital signage

EV-110 / 115



## Overview

Create stunning visual displays and immersive environments with the EV-110 and EV-115, the cutting-edge digital signage solution from Epson. The EV-110 and EV-115 laser projectors captivate audiences by simultaneously illuminating and projecting on any environment, even in compact spaces for digital art, commercial signage and décor applications. Designed to blend in discreetly to any setting — from retail, hospitality and event spaces to corporate showrooms and museums — the EV-110 and EV-115 laser digital signage projectors offers a sleek design, with an array of configuration and content display options.

### KEY FEATURES:

- **3 x Brighter colours and reliable performance<sup>1</sup>** - 3LCD, 3-Chip Technology. Look for both high colour brightness and high white brightness
- **NEW Bright Images** - up to 2,200 lumens colour/white brightness
- **Break through laser technology** - provides up to 20,000 hours of virtually maintenance free operation, with the added benefits of higher image contrast and instant ON/OFF
- **NEW GPI control** - create a simple interaction command with built-in GPI signal to achieve dual operation such as power to turn 'on/off' or playlist to 'start/stop'
- **NEW Bluetooth audio** - add sound effects or music clips to complete the stunning display
- **NEW Lighting track option** - ELPMB66W/B is compatible with lighting tracks (ERCO and EUTRAC model only)
- **Create head-turning digital signage** - illuminate and project on virtually any surface or material, for digital art, commercial signage and décor applications
- **Blends in discreetly** - sleek design easily blends into its surroundings, offering vertical and horizontal rotation, with flexible placement on floors and mounting on walls or ceilings
- **Robust management and control tools** - via Epson's Web-based application or over the network with Crestron, Extron and more
- **Scalable, for an array of applications** - install multiple EV-110 series projectors and utilise Edge Blending technology for versatile, breathtaking displays
- **DIY content creation** - comes with templates, effects, colour filters and customisable options; playlist and playback function allow for seamless content management for single or multiple projectors
- **Expansive connectivity** - HDMI, SD card, LAN and USB-A for direct content display and storage when needed

<sup>1</sup> Colour brightness (colour light output) in brightest mode, measured by a third-party lab in accordance with IDMS 15.4. Colour brightness will vary depending on usage conditions. Top-selling Epson 3LCD projectors versus top-selling 1-chip DLP projectors based on NPD sales data for May 2017 – April 2018.

## BASIC FUNCTIONS

### 3LCD Technology

All Epson projectors are based on 3-chip LCD technology for amazing colour, incredible detail and solid reliability. 3LCD's 3-chip architecture dedicates an entire chip to process each primary colour – red, green and blue, continuously. Unlike single-chip technology that delivers colour sequentially, you get full-time colour. The result is vibrant, realistic images and video all delivered with 3LCD's true-to-life colour.



### Up to 3x Brighter Colours with Epson Projectors\*

Epson projectors use 3LCD Engines that have no colour wheel with a white segment and therefore don't force a tradeoff between white and colour brightness.

In fact, Epson projectors have up to 3x Brighter Colours than their leading competitive 1-chip DLP projectors\*. If you are looking for business and education projectors or 720p home entertainment projectors, know that choosing Epson projectors means up to 3x brighter colours. If you are looking for 1080p home entertainment projectors, you consistently get 2x and up to 3x Brighter Colours than competitor 1-chip DLP projectors\*.



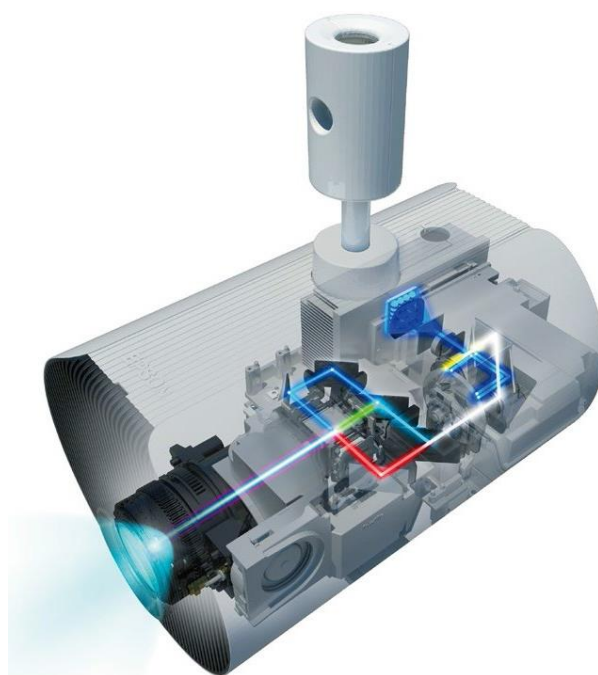
All Epson projectors list both White Brightness and Colour Brightness specifications, and all have high Colour Brightness.

\*Colour brightness (colour light output) in brightest mode, measured by a third-party lab in accordance with IDMS 15.4. Colour brightness will vary depending on usage conditions. Top-selling Epson 3LCD projectors versus top-selling 1-chip DLP projectors based on NPD sales data for May 2017 – April 2018.

### Laser Light Source



Experience astonishing quality and reliability with Epson's laser light source technology. The newly designed laser light source and advanced electrostatic filter offers fit and forget reliability to keep maintenance to a minimum. Additionally, the laser light source is highly reliable, eliminating worry of the interruptions while signage display is on.



For further information please visit [www.channel.epson.com.au](http://www.channel.epson.com.au)





## THE EVOLUTION OF SPATIAL DESIGN

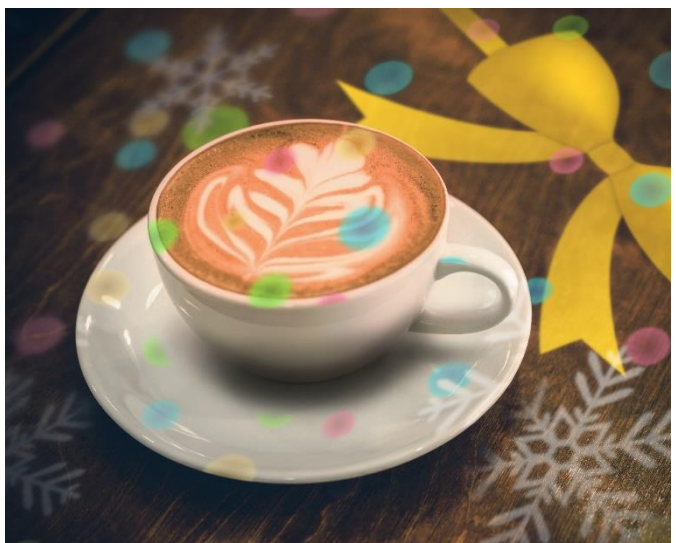
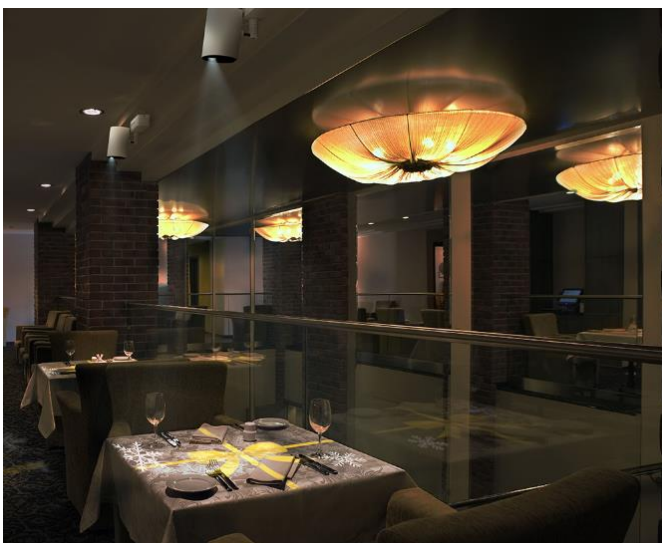
### Designed for Commercial Fit-Out

Epson's EV-110 and EV-115 come in both white and black in order to seamlessly blend into existing designs of retail space. The attention of shoppers will be focused on the visual experience, not distracted by the projector.



### 2,200 Lumens

The EV-110 and EV-115 can produce White Light and Colour Light Output of 2,200 lumens, offering a bright and vivid image to enhance the space ambiance to impress your customers.

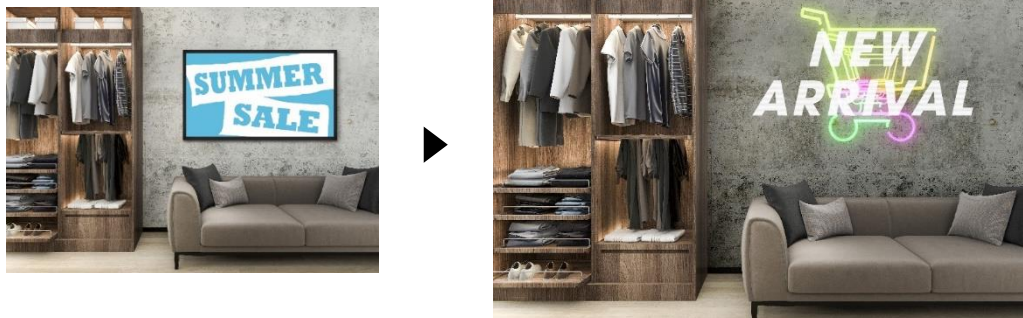


For further information please visit [www.channel.epson.com.au](http://www.channel.epson.com.au)



## Non-Rectangular Images

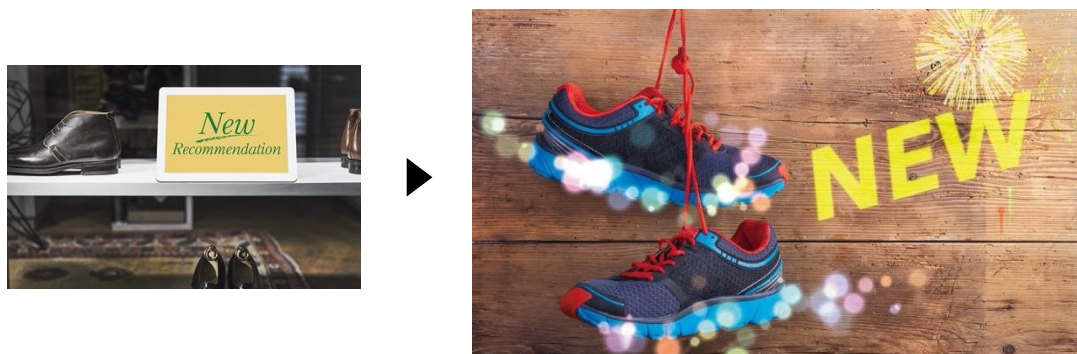
The EV-110 and EV-115's high contrast ratio makes it possible to project images at their highest quality. The projected image will blend without a rectangular boundary of a frame – unlike a flat panel display. This uniquely available feature of laser projection offers a great way to upgrade retail and restaurant spaces.



*Projection digital signage*

## Project Images onto Any Object

The projection isn't limited to architectural surfaces. You can project eye-grabbing, informative visual displays on any objects to re-define the space or communicate your displayed products with animated sales messaging.



*Projection digital signage*

## Have It Gone When Switched Off

Signage projection disappears the moment projector is turned off, unlike flat panel displays. When not used for display, the space can come available for other purposes quickly and then projection can be switched back on when required.



For further information please visit [www.channel.epson.com.au](http://www.channel.epson.com.au)



## High Contrast Ratio

The EV-110 and EV-115's high contrast ratio of 2,500,000:1 makes it possible to project images without a boundary. Images can be projected with a transparent or invisible background, allowing foreground contents of any shape to be clearly emphasized while seamlessly being integrated with the environment.



## HIGH INSTALLATION FLEXIBILITY

### A Variety of Installation Choices



The EV-110 and EV-115 can be directly mounted either on the ceiling, on the floor<sup>\*1</sup>, or in a lighting track<sup>\*2</sup>.



**ELPMB55** – floor stand mount kit



**ELPMB66** – lighting track mount kit

<sup>\*1</sup> An optional floor stand kit (ELPMB55W/B) is required.

<sup>\*2</sup> An optional lighting track mount kit (ELPMB66W/B) is required. Installation work must be carried out carefully to ensure that the model of the lighting track is compatible with EV-110 and EV-115. Otherwise, the mount or the projector could potentially fail, causing injury or accident during the installation. Please contact us for further information.

For further information please visit [www.channel.epson.com.au](http://www.channel.epson.com.au)



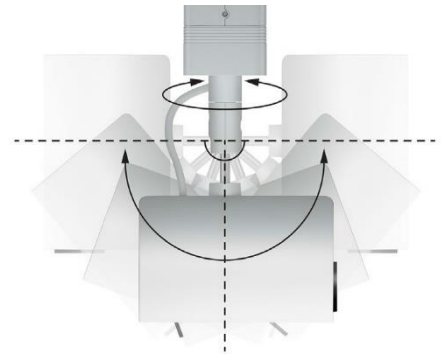
## Flexible Positioning in Any Orientation

With laser technology, the projector can be positioned at any angle to any surface. You can display ads on a wall one day, and direct customers around the store with images projected onto the floor the next day.



## Adjustable Ball Joint

An unique ball joint design of the EV-110 and EV-115 enables angle adjustment simply by a screw. Rotate, pivot and revolve the projector head to precisely position the display.



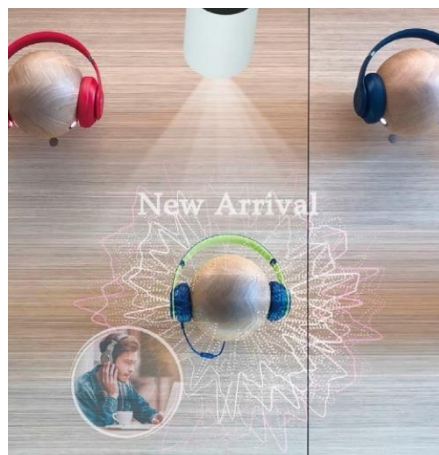
## VERSATILE APPLICATION

Improve your space's ambiance with projection décor. The EV-110 and EV-115 are suitable for set up in spaces such as shop walls, entrances, retail displays, hotel receptions and restaurants. The projectors can be either used as pathfinder or spotlight to enhance the aesthetics of existing displays. From projecting timely messaging such as social distancing directions, to increasing efficiency with instant sale display abilities, to illuminating unique dining ambiances, the EV-110 and EV-115 can enhance the way customers interact with brands and products.

## Application Scenarios



Restaurants  
**On the Ceiling**



Retail  
**Product Display**



Shops  
**On Walls**

For further information please visit [www.channel.epson.com.au](http://www.channel.epson.com.au)



## ADVANCED DISPLAY FEATURES

### Edge Blending

Use multiple EV-110 and EV-115 projectors\* to create a wide and large display signage without expensive installation setup, such as LED walls, for stunning visual impact.

*\*Point correction not available on EV-110 and EV-115. Third party blending/warping software is recommended for professional edge blend.*

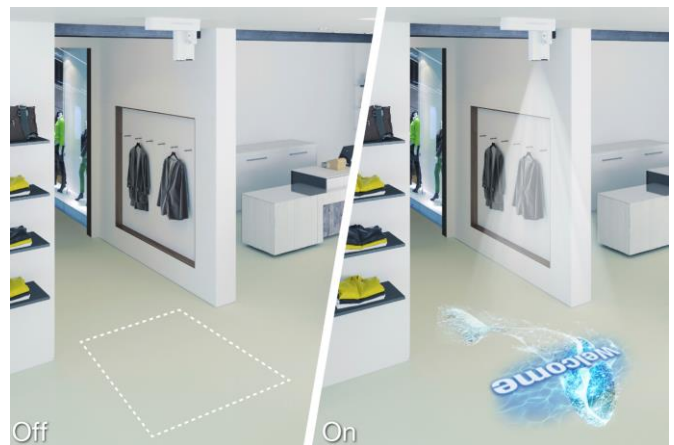


### NEW GPI Support

Reduce the total cost of interactive digital signage display setup by directly connecting a sensor to the EV-110 and EV-115 to create motion activation in the shop floor entrance. The built-in GPI (General Purpose Interface) Input support\* enables simple interactivity operations such as 'Power On/Off' and 'Start/Stop playlist' on the projector.

*\*Requires USB-A GPI interface cable and sensor.*

*\*A media player is required for multiple projection control or multi sensor interactivity and control.*



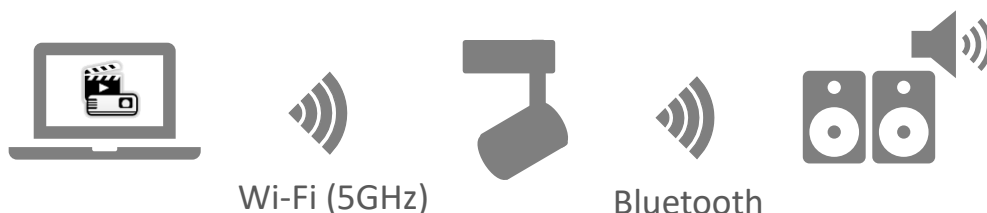
### Cableless Projection - SD Card or USB Memory

Play back images directly from an SD card or USB memory without the need for an external device. Using the content manager allows you to create playlists and set schedules on the SD card or USB memory.



### NEW Bluetooth Audio Output

Play audio or background music to match the projection display image without having to run a cable to the sound system.



For further information please visit [www.channel.epson.com.au](http://www.channel.epson.com.au)



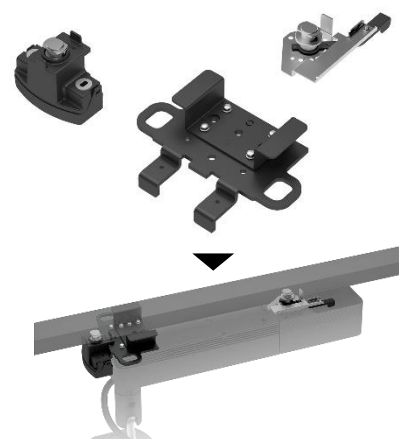


## NEW Lighting Track Option (ELPMB66W/B)

Attach the ELPMB66 to the EV-110 and EV-115 for the projector to be mounted on an existing lighting track\* which can disguise easily as stylish spotlights and won't alter the existing interior design.

*\*Compatible lighting track model: ERCO 78301.000 (1m), ERCO 78302.000 (2m), EUTRAC Stromschienen Surface Track Standard 25-10 (1m).*

*\*Installation work must be carried out carefully to ensure that the model of the lighting track is compatible with EV-110 and EV-115. Otherwise, the mount or the projector could potentially fail, causing injury or accident during the installation. Please contact us for further information.*



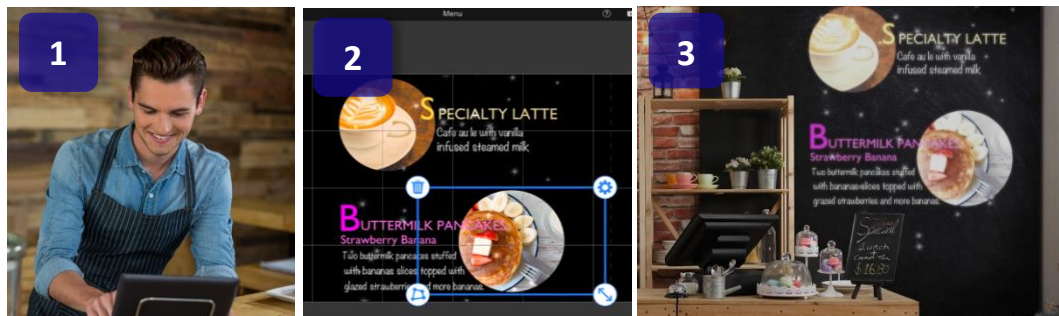
ELPMB66 – lighting track mount kit

## EASY MANAGEMENT

### Epson Creative Projection App



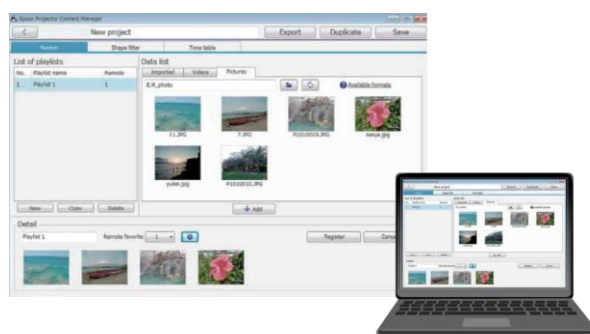
With Epson Creative Projection app, you can create original, dazzling content to enliven rooms, product displays and spaces around you, anytime and anywhere. Available on iOS devices, such as iPhone and iPad, content can be projected on the wall with the ability to edit and preview content at the same time. With extensive preloaded templates, freely arrange and combine materials in the app any way you like. From simply uploading photos and movies from mobile device to making animated visual effects, instantly make your display content come to life without requiring a PC.



### Epson Content Management Software



With Epson Content Management software, you can easily create playlists for signage content from a PC or a laptop. The ability to set schedule and register the shape filter settings gives you advanced control such as synchronised playback.



For further information please visit [www.channel.epson.com.au](http://www.channel.epson.com.au)



## Pricing

DESCRIPTION	PRODUCT CODE	RRP inc gst
EV-110	V11HA22053	\$3,399
EV-115	V11HA22153	\$3,399

## Part numbers and dimensions

DESCRIPTION	PRODUCT CODE	BARCODE
EV-110	V11HA22053	9314020633829
EV-115	V11HA22153	9314020633836
PRODUCT PACKAGE DIMENSIONS		
Dimensions (D x W x H)	477 x 535 x 244 mm	
Weight	9.16kg	

## Accessories

Model	Product Code	RRP inc gst
Floor stand – White (ELPMB55W)	V12H888W10	\$119
Floor stand – Black (ELPMB55B)	V12H888B10	\$119
Lighting track – White (ELPMB66W)	V12HA32053	\$279
Lighting track – Black (ELPMB66B)	V12HA32153	\$279

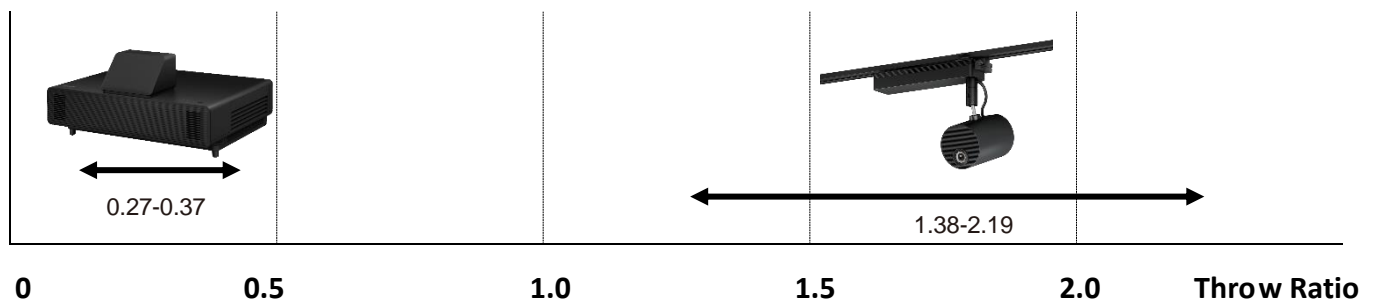
## CoverPlus Warranty

Description	Product Code	RRP inc gst
Extended Warranty (additional 2 years warranty)	5YWEV110	\$499
Extended Warranty (additional 2 years warranty)	5YWEV115	\$499

## THROW DISTANCE COMPARISON

Model Name	EV-110/115 <b>NEW</b> <sup>*1</sup>	EB-805F <sup>*2</sup>
100 inch	300-476cm	61.3-80.3cm
80 inch	239-381cm	48.7-66.4cm
60 inch	179-285cm	39.2-49.3cm
40 inch	118-189cm	61.3-80.3cm

<sup>\*1</sup> Aspect ratio: 16:10    <sup>\*2</sup> Aspect ratio: 16:9



## APPLICATION COMPARISON

Model name	EV-110/115 <b>NEW</b>	EB-805F
Floor installation	✓ ELPMB55W/B (Optional)	✓
Ceiling installation	✓	✓ ELPMB62 (Optional)
Lighting track installation	✓ ELPMB66W/B (Optional)	N/A
Optical zoom function	✓	N/A
Content Playback mode	✓	✓
Epson Projector Content Manager	✓	✓
Epson Creative Projection	✓	✓
GPI support	✓	N/A
Build-in speaker	N/A	✓ 8W x 2
Bluetooth audio	✓ Qualcomm® aptX™/SBC	N/A
Digital Image Shift	✓	✓
Edgeblend	✓	✓



## Quick Comparison

Model	EV-110/115 <b>NEW</b>	EV-100/105
Case colour	White/Black	White/Black
RRP inc GST	\$3,399 inc gst	\$2,899 inc gst
White light output	2,200	2,000
Colour light output	2,200	2,000
Display technology	3LCD	3LCD
Native resolution	WXGA	WXGA
Aspect ratio	16:10	16:10
Contrast ratio	2,500,000:1	2,500,000:1
Keystone	V $\pm 45^\circ$ H $\pm 40^\circ$	V $\pm 45^\circ$ H $\pm 40^\circ$
Quick corner	✓	✓
Zoom ratio	Optical zoom: 1 - 1.58 Digital zoom: 1 - 1.4	Optical zoom: 1 - 1.58 Digital zoom: 1 - 1.4
Edge blending	✓	✓
Bluetooth Audio	✓	N/A
GPI in (USB-A)	✓ Supports dual signal control	N/A
Ceiling mount	Included	Included
Content playback	✓	✓
Wireless lan	Included	Included
Crestron connected	✓	✓
Art-Net	✓	✓
Dimension	$\phi 175 \times D 265$	$\phi 175 \times D 265$
Weight	6.9 kg	6.9 kg
Lighting track mount (ERCO and EUTRAC standard)	ELPMB66W ELPMB66B	ELPMB66W ELPMB66B
Warranty	3 years or 20,000hrs*	5 years or 20,000hrs*
Extended warranty	Order code: 5YWEV110 5YWEV115	N/A

\*whichever comes first

## Detailed Specification Comparison

Model	EV-110/115 <b>NEW</b>	EV-100/5	EB-805F
RRP (inc GST)	\$3,399	\$2,899	\$4,499
Display Technology	3LCD	3LCD	3LCD
Resolution	WXGA	WXGA	Full HD*
Light Source	Laser	Laser	Laser
Aspect Ratio	16:10 up to 150"	16:10 up to 150"	16:9 up to 130" 16:6 up to 120"
White/Colour Light Output	2,200 lm / 2,200 lm	2,000 lm / 2,000 lm	5,000 lm / 5,000 lm
Contrast Ratio	2,500,000:1	2,500,000:1	2,500,000:1
Throw Ratio	1.38 (Zoom:Wide), 2.19 (Zoom:Tele)	1.38 (Zoom:Wide), 2.19 (Zoom:Tele)	0.27 (Zoom:Wide), 0.37 (Zoom:Tele)
Offset	10:0	10:0	8.68:-1
Keystone	V $\pm 45^\circ$ H $\pm 40^\circ$	V $\pm 45^\circ$ H $\pm 40^\circ$	V $\pm 3^\circ$ H $\pm 3^\circ$
Zoom Ratio	1.0 - 1.58 (Optical)	1.0 - 1.58 (Optical)	1.0 - 1.35 (Digital)
Edgeblend	✓	✓	✓
HDBaseT	N/A	N/A	✓
HDMI input	1	1	3
SD card input	✓	✓	N/A
Content Management/ Content playback	✓	✓	✓
Art-Net	✓	✓	N/A
Wireless	Included	Included	Optional ELPAP11
Miracast	N/A	N/A	N/A
Speakers	N/A	N/A	16W
Bluetooth audio out	✓	N/A	N/A
GPI (in)	✓	N/A	N/A
Projector Mount	ELPMB55 Floor stand Optional, ELPMB66 Lighting track Optional	ELPMB55 Floor stand Optional, ELPMB66 Lighting track Optional	ELPMB62 Wall mount Optional
Ceiling mount	Included	Included	Third-party mount Optional
Warranty Projector	3 Years	5 Years	3 Years
Dimension	Projection unit: $\phi 175 \times D265$ Power supply unit: W459 x D110 x H65 (with Cable Cover)	Projection unit: $\phi 175 \times D265$ Power supply unit: W459 x D110 x H65 (with Cable Cover)	375 x 458 x 209.5 excluding feet (D x W x H mm)
Power Consumption Normal/Eco	149W/112W	170W/118W	366W/262W

<sup>1</sup> With an optional ELPAP11, it is possible to use the Miracast and Wi-Fi function simultaneously (simple AP mode and manual mode).

## Connectivity Panel

EV-110/115



For further information please visit [www.epson.com.au](http://www.epson.com.au)