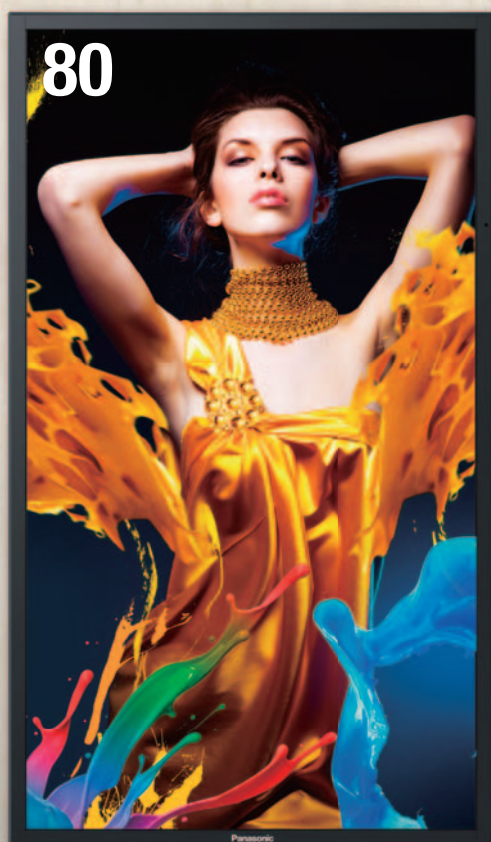


Panasonic

ideas for life

80-inch **TH-80LF50W**
Full HD LED LCD Display

70-inch **TH-70LF50W**
Full HD LED LCD Display



Large-Screen LCD Displays with Eye-Catching Brightness and Rugged Reliability



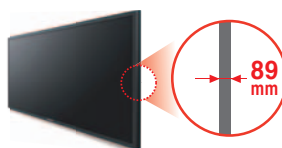
01 Large Screen and High Brightness

High 700-cd/m² brightness and 5,000:1 contrast ensure excellent, eye-catching visibility even in large public spaces. This greatly increases the promotional value for signage use.



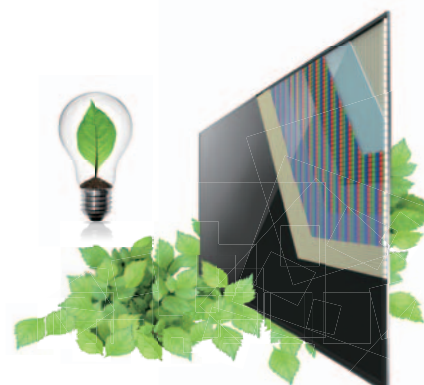
02 Slim Design with 89-mm Depth

This ultrathin design has a depth of only 89 mm. Its light weight also enables ceiling-suspension, for greater installation flexibility.



03 High Reliability

The highly durable panel allows continuous, 24/7 operation. The LED backlight also saves energy for extremely efficient operation.



Product specification (Design and specification subject to change without notice)

Model No.	TH-80LF50W	TH-70LF50W
DISPLAY		
Screen Size (Diagonal)	80-inch	70-inch
Aspect Ratio	16:9	
Panel Type	LED	
Number of Pixels (H x V)	1,920 x 1,080 pixels	
Brightness	700 cd/m²	
Contrast Ratio	5,000:1	
Response Time	9 ms (G to G)	
Viewing Angle (Horizontal/Vertical)	178°/178°	
CONNECTION TERMINAL		
VIDEO In	BNC x 1	
Audio In (L/R)	RCA Pin Jack x 1 set	
HDMI In	HDMI Type A x 1	
Component/RGB In	BNC x 1 set	
Audio In (L/R)	RCA Pin Jack x 1 set	
DVI-D In	DVI-D 24-pin x 1	
Audio In (L/R)	M3 Jack x 1 (Shared with PC In)	
PC In	Mini D-Sub 15-pin x1 (Female)	
Audio In (L/R)	M3 Jack x 1 (Shared with DVI-D In)	
DVI-D Out	DVI-D 24-pin x 1	
Function Slot	SLOT2.0 x 1	
CONTROL		
Serial In/Out	D-Sub 9-pin x 1/ x 1, RS-232C Compatible	
LAN Control	RJ45 10BASE-T/100BASE-TX, Compatible with PLink™	
ELECTRICAL		
Power Requirements	220-240 V AC, 50/60 Hz	
Power Consumptions	Approx. 380 W	Approx. 260 W
Power Off Condition	0.3 W	
Stand-by Condition	0.5 W	
AUDIO		
Line Out	RCA Pin (L/R) x 1 set, Output level: Variable (-∞ - 0 dB)	
MECHANICAL		
Dimensions (W x H x D)	1,848 x 1,073 x 89 mm	1,604 x 931 x 89 mm
Weight	Approx. 60.0 kg	Approx. 47.0 kg
ENVIRONMENTAL		
Operating Environment	Temperature: 0 °C to 40 °C Humidity: 20% to 80% (Non condensation)	

Features

- 700-cd/m² brightness
- 5000:1 contrast ratio
- 24/7 operation
- LAN control compatibility
- DVI, RS232-C daisy chain capability
- Max. 5 x 5-unit video wall
- Landscape and portrait orientation
- Ceiling-suspension capability
- VESA 400 x 400-mm compatibility
- Equipped with a function slot "SLOT2.0"
- ECO mode for easy energy-saving

Optional Accessories

Pedestal

TY-ST65P20 (For 80-inch)

TY-ST58P20 (For 70-inch)

Wall Hanging Bracket

TY-WK70PV50

Protection Glass

TY-PG80LF50 (For 80-inch)

TY-PG70LF50 (For 70-inch)

Optional Function Board

HD-SDI Terminal Board

TY-FB10HD